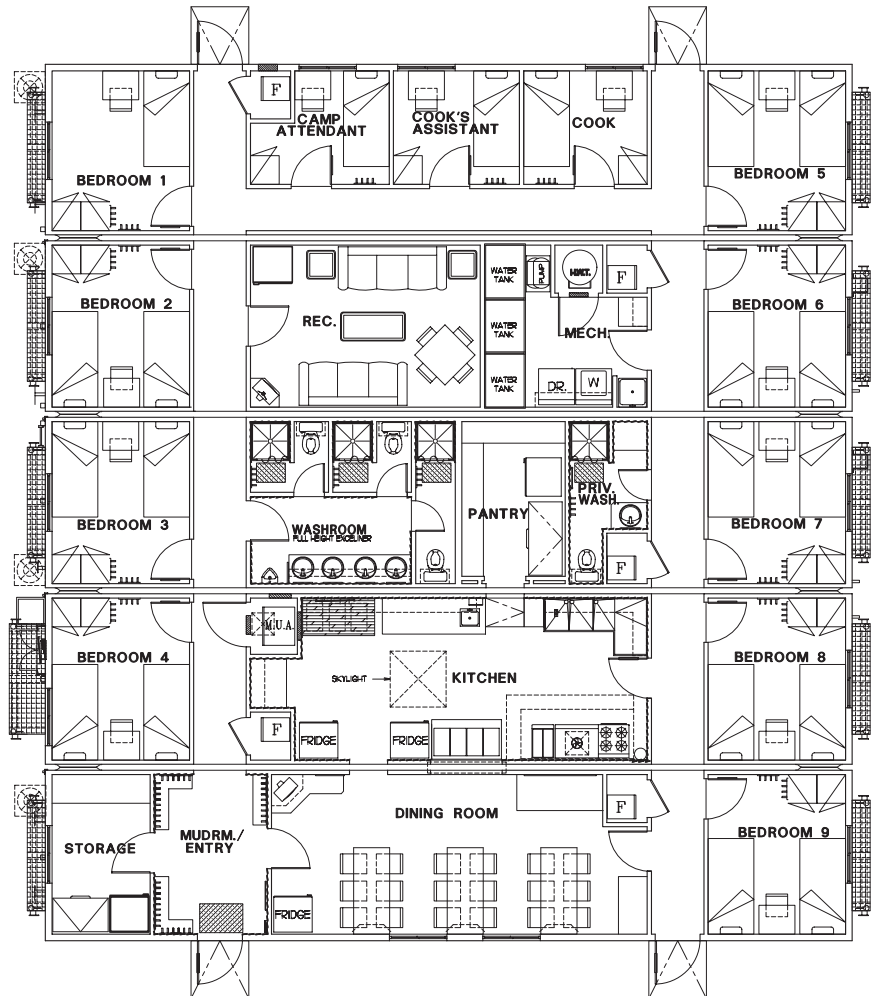


# 5-Unit Side-by-Side Complex

## Available Features

- ✦ 21-24 beds with double occupancy
- ✦ Lockable storage
- ✦ Workstation in each room
- ✦ Personal temperature control in each room
- ✦ Walls engineered to reduce noise transfer
- ✦ Satellite TV in recreation area, dining room and prewired to each guest room
- ✦ Private and semi-private washrooms
- ✦ Laundry facilities
- ✦ Diner seats 18 comfortably per sitting
- ✦ Walk-in food storage.
- ✦ Boot room at main entrance
- ✦ Engineered for extreme climates
- ✦ Ability to complex together with other equipment and arctic corridors to accommodate up to 2,000 people
- ✦ Ability to customize units to meet unique client needs



PTI Group is one of North America's largest fully integrated suppliers of remote site services providing permanent and temporary workforce accommodations, catering & food services, facility management, and other value-add services to resource industries worldwide.

© PTI Group Inc.  
 Drawings are for discussion purposes only. Facility layouts and features may vary. No unauthorized distribution or duplication of this drawing is permitted without expressed written consent from PTI Group Inc.



**Calgary**  
 Tel: 1.403.234.8983  
 Toll Free: 1.877.234.8983

**Edmonton**  
 Tel: 1.780.463.8872  
 Toll Free: 1.800.314.2695

**Denver**  
 Tel: 1.720.279.6363  
 Toll Free: 1.888.382.6085