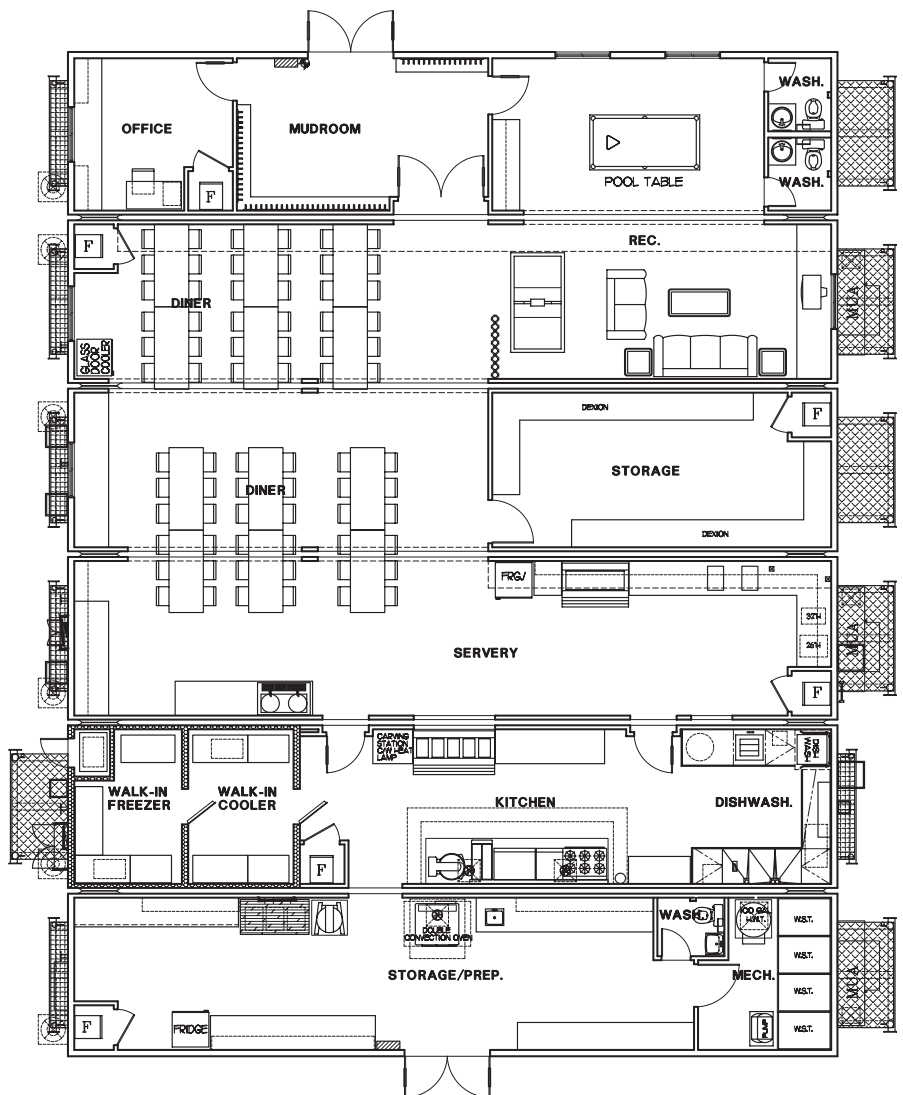


6-Unit Kitchen / Diner / Recreation Complex

Available Features

- ✦ Food production and food storage capacity to serve up to 125 people
- ✦ Diner seats 72 people comfortably per sitting
- ✦ Male / female washrooms
- ✦ Large boot room at main entrance
- ✦ Office space
- ✦ Satellite TV in recreation area
- ✦ Walk-in freezer and walk-in cooler
- ✦ Engineered for extreme climates
- ✦ Ability to complex together with other equipment and arctic corridors to accommodate up to 2,000 people
- ✦ Ability to customize units to meet unique client needs



PTI Group is one of North America's largest fully integrated suppliers of remote site services providing permanent and temporary workforce accommodations, catering & food services, facility management, and other value-add services to resource industries worldwide.

© PTI Group Inc.
 Drawings are for discussion purposes only. Facility layouts and features may vary. No unauthorized distribution or duplication of this drawing is permitted without expressed written consent from PTI Group Inc.



Calgary
 Tel: 1.403.234.8983
 Toll Free: 1.877.234.8983

Edmonton
 Tel: 1.780.463.8872
 Toll Free: 1.800.314.2695

Denver
 Tel: 1.720.279.6363
 Toll Free: 1.888.382.6085