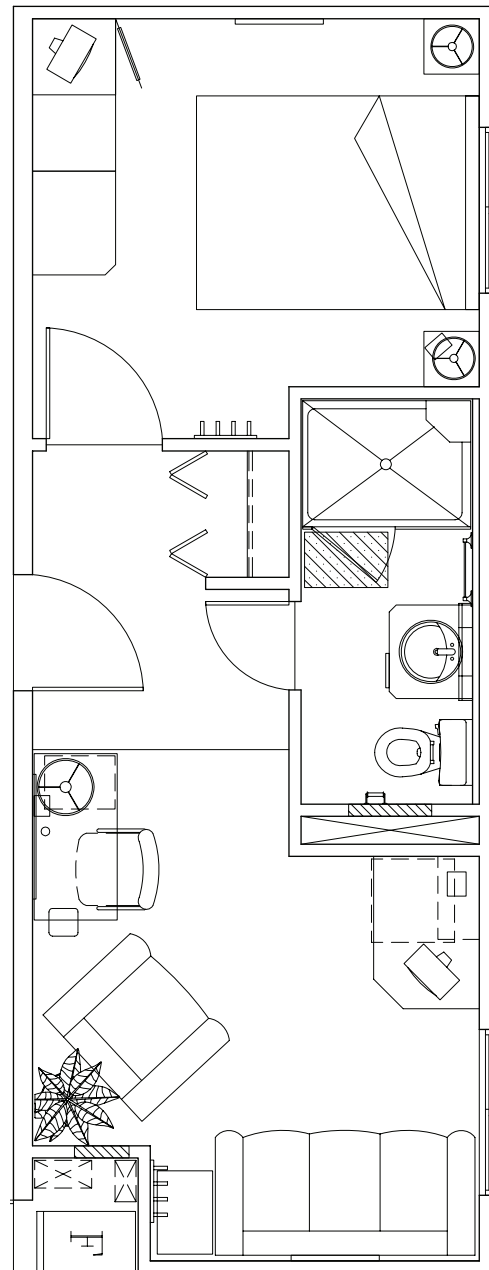


300 sq. ft. Suite

Available Features

- ✧ Queen bed
- ✧ Private 3-piece bathroom
- ✧ In-suite workstation
- ✧ Lockable wardrobe / storage
- ✧ Seating area
- ✧ Satellite TV
- ✧ Free Internet access
- ✧ Telephone
- ✧ Guest messaging
- ✧ Coffee service
- ✧ Mini fridge
- ✧ Card access
- ✧ Privacy walls between suites
- ✧ Personal temperature control available in each room



PTI Group is one of North America's largest fully integrated suppliers of remote site services providing permanent and temporary workforce accommodations, catering & food services, facility management, and other value-add services to resource industries worldwide.

© PTI Group Inc.
Drawings are for discussion purposes only. Facility layouts and features may vary. No unauthorized distribution or duplication of this drawing is permitted without expressed written consent from PTI Group Inc.

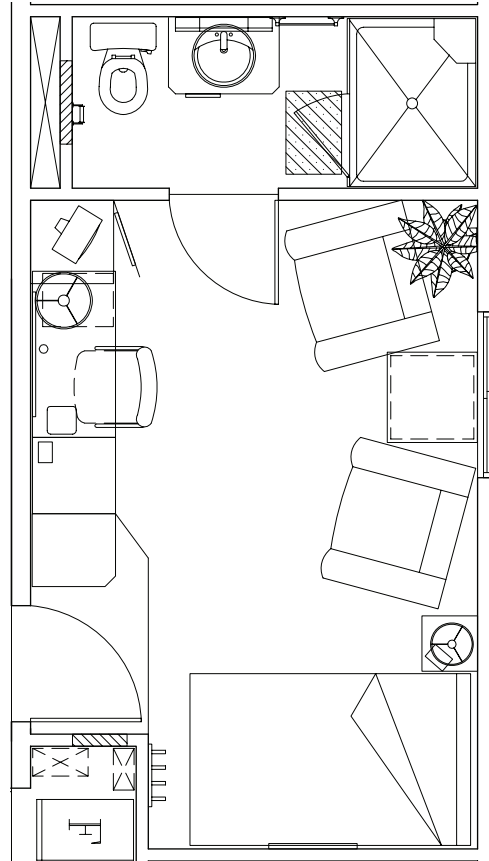


For more information on our facilities and reservations, please contact
1.800.314.2695 | MajorProjects@ptigroup.com | www.ptigroup.com

200 sq. ft. Suite

Available Features

- ◇ Double bed
- ◇ Private 3-piece bathroom
- ◇ In-suite workstation
- ◇ Lockable wardrobe / storage
- ◇ Seating area
- ◇ Satellite TV
- ◇ Free Internet access
- ◇ Telephone
- ◇ Guest messaging
- ◇ Coffee service
- ◇ Mini fridge
- ◇ Card access
- ◇ Privacy walls between suites
- ◇ Personal temperature control available in each room



PTI Group is one of North America's largest fully integrated suppliers of remote site services providing permanent and temporary workforce accommodations, catering & food services, facility management, and other value-add services to resource industries worldwide.

© PTI Group Inc.
Drawings are for discussion purposes only. Facility layouts and features may vary. No unauthorized distribution or duplication of this drawing is permitted without expressed written consent from PTI Group Inc.

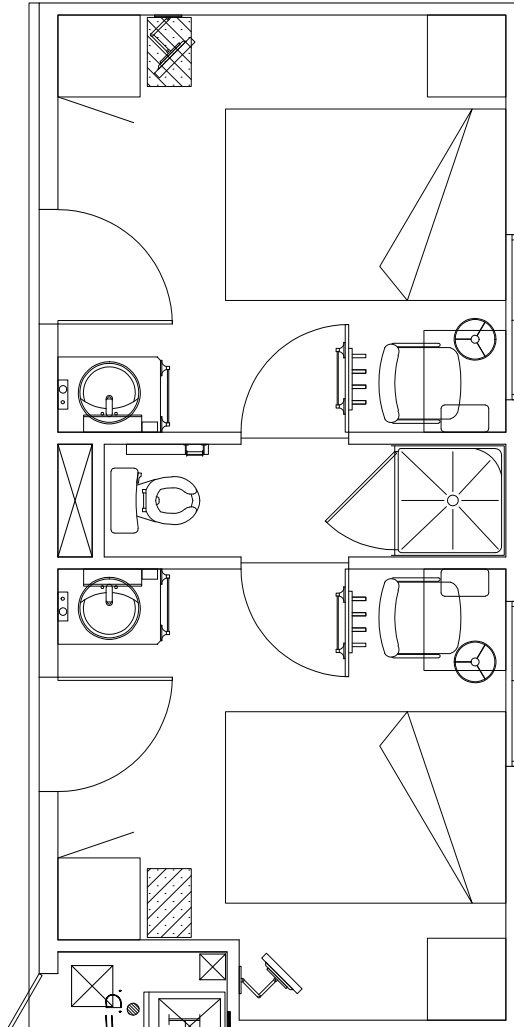


For more information on our facilities and reservations, please contact
1.800.314.2695 | MajorProjects@ptigroup.com | www.ptigroup.com

100 sq. ft. Suite

Available Features

- ◇ Double bed
- ◇ Lockable wardrobe / storage
- ◇ In-suite workstation
- ◇ In-suite sink
- ◇ Semi-private shared washroom
- ◇ Satellite TV
- ◇ Free Internet access
- ◇ Telephone
- ◇ Guest messaging
- ◇ Card access
- ◇ Privacy walls between suites
- ◇ Personal temperature control available in each room



PTI Group is one of North America's largest fully integrated suppliers of remote site services providing permanent and temporary workforce accommodations, catering & food services, facility management, and other value-add services to resource industries worldwide.

© PTI Group Inc.
Drawings are for discussion purposes only. Facility layouts and features may vary. No unauthorized distribution or duplication of this drawing is permitted without expressed written consent from PTI Group Inc.

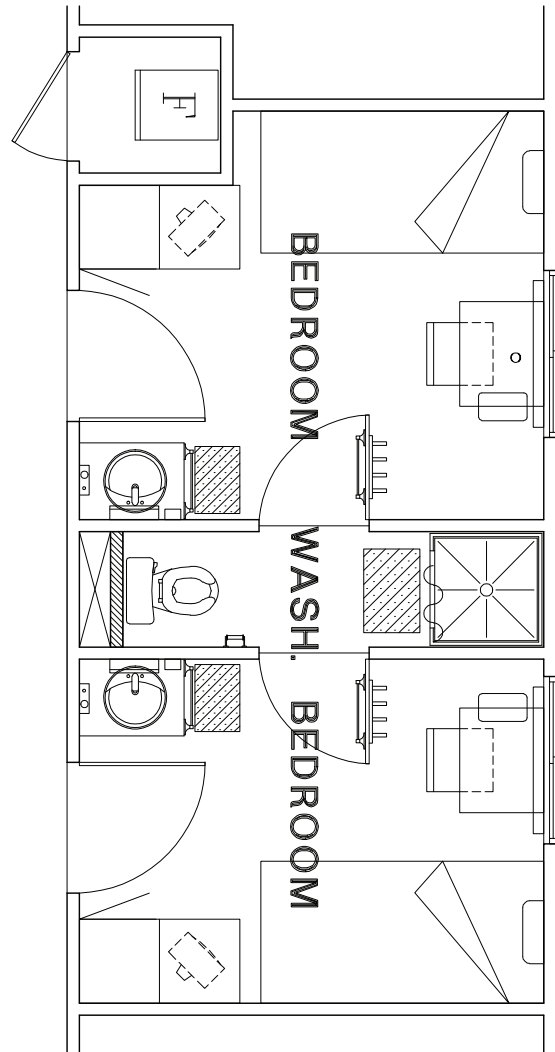


For more information on our facilities and reservations, please contact
1.800.314.2695 | MajorProjects@ptigroup.com | www.ptigroup.com

91 sq. ft. Suite

Available Features

- ✧ Lockable wardrobe / storage
- ✧ In-suite workstation
- ✧ In-suite sink
- ✧ Semi-private shared washroom
- ✧ Satellite TV
- ✧ Free Internet access
- ✧ Telephone
- ✧ Guest messaging
- ✧ Card access
- ✧ Privacy walls between suites
- ✧ Personal temperature control available in each room



PTI Group is one of North America's largest fully integrated suppliers of remote site services providing permanent and temporary workforce accommodations, catering & food services, facility management, and other value-add services to resource industries worldwide.

© PTI Group Inc.
Drawings are for discussion purposes only. Facility layouts and features may vary. No unauthorized distribution or duplication of this drawing is permitted without expressed written consent from PTI Group Inc.



For more information on our facilities and reservations, please contact
1.800.314.2695 | MajorProjects@ptigroup.com | www.ptigroup.com